



All World & Collections

With special sections of British Empire, France and Egypt

May 28-30, 2014

Genève - Feldman Galleries

Europe - Including France and Colonies	40000-40889
All World Collections	40890-41051
British Empire	41052-41642
Overseas	42000-42652
Egypt	43000-43542

New Guinea



- | | | | | | |
|-------|----|-----|---|--------|-----|
| 41423 | * | | 1914-15 1d on 3pfg brown, mint showing DOUBLE SURCHARGE, very fine & scarce (SG £1'300), cert. BPA | 16e | 300 |
| 41424 | ** | www | 1931-32 Official 6d mint nh left marginal block of four, showing 'POSTAGE' error on bottom right stamps, fresh, very fine & scarce (SG £400+) | 08 var | 100 |
| 41425 | ✉ | 232 | 1936 (Jun 18) First flight cover from Daru to Mt. Blucher with 1930 3d airmail tied by Daru cds, with type inscription adjacent describing the flight by "Kono" to the Police Kamp for Archbold's expedition, signed by both pilots, fine (Mü.28, 1'500pts) | | 150 |

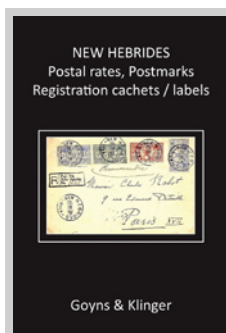
New Hebrides

Early Missionary Letters

- | | | | | | |
|-------|---|-----|--|--|-------|
| 41426 | ✉ | 232 | 1841 (Jan 9) Entire from Glasgow to Tanna Island, care of Revd Dr Ross in Sydney, with Glasgow despatch, London tombstone ds and Ship Letter oval ds, reverse with Sydney Ship Letter cds, with 8d paid in UK and 3d inward ship letter due in Sydney, rare early postal history item of New Hebrides | | 400 |
| 41427 | ✉ | 232 | 1841 (Dec 27) Entire from Glasgow to Tanna Island, care of Revd Dr Ross in Sydney, with Glasgow despatch, London tombstone ds and Ship Letter oval ds, reverse with Sydney Ship Letter cds, with 8d paid in UK and 3d inward ship letter due in Sydney, rare early postal history item of New Hebrides, ex Goron (sold €660) | | 400 |
| 41428 | ✉ | 232 | 1853 (Nov) Entire from Rev. John Inglis at Aneiteum, New Hebrides, dated November 1853 and addressed directly to Revd Nisbet at Savaii (Samoa Islands), carried on missionary schooner "John Williams," rare, ex Goron (sold €1'680) | | 1'200 |

Military Mail

- | | | | | | |
|-------|---|-----|--|--|-------|
| 41429 | ✉ | 236 | 1889 Envelope from a sailor on "HMS SWINGER NEW HEBRIDES," signed by his commanding officer, sent to England and carried by P&O Ballaarat from Sydney via Suez and Brindisi, GB 2d franking corresponding to double the concession rate of one penny for suitably endorsed seaman's mail. The pair has been excised and neatly replaced, small cover faults, only three Swinger covers from New Hebrides recorded, ex Jersey & Goron (sold for €4'320) | | 3'000 |
| 41430 | ✉ | 236 | 1907 Postcard datelined "HMS Prometheus / Vila / New Hebrides / Aug 12 07", sent to England with GB KEVII 1d tied in London paying the Soldier's concession rate, very fine and rare, please see the included album page for the full story of its journey | | 500 |
| 41431 | ✉ | 236 | 1917 Envelope endorsed "F.M" (Franchise Militaire) with circular "MARINE FRANCAISE / SERVICE A LA MER" cachet with anchor, incl original contents datelined Port Sandwich 27th May, sent to France, minor soiling, fine | | 200 |



New Hebrides Postal Rates, Postmarks, Registration Cachets / Labels


by Malcolm H. Goyns & Roland Klinger

Book can be ordered through any good book store or directly from Amazon. Price: € 55

"If this book does not generate a good amount of interest in this neglected territory nothing will" (Stamp News - Australia)

"The authors are to be congratulated in publishing this volume" (Gibbons Stamp Monthly - UK)

"It is likely to become the standard reference book for New Hebrides postal history" (Stamp & Coin Mart - UK)

Lot N°	Symbol(s)	Photo	Page		Cat. N°	Estimate (€)
41432	✉		236	1917 (Jul 17) Envelope endorsed "F.M" (Franchise Militaire) sent to France with 1911 10c tied by violet type PM2 cds, reverse with "NOUVELLES-HEBRIDES / Le Chef / du Service / de Santé / PORT VILLA" violet cachet, Sydney bs, incl. contents, fine		100
41433	✉	www		1943-45 US Forces group of 28 covers from US Forces in New Hebrides during WW2 (incl. one from New Zealand forces), with a variety of cancels and manuscript markings identifying the various units stationed there, a difficult group (Est. € 100/150)		Offer
Official Mail						
41434	✉		236	1909 (Feb 27) Official free frank cover to the UK from the Condominium Post Office (imprint at lower left) with ms "O.S." at top right with Vila type PM4 cds at top, arrival bs, fine and scarce, the earliest recorded official cover (earlier than the one we sold in the Goron collection for €280)		200
41435	✉		236	1919-76, Group of 123 "O.C.S" covers mostly from the British, mostly stampless, with a wide range of cachets and envelope imprints (Education, Police, Courts, District Agents, Residencies, etc.), some registered, better incl. 1927 registered free frank to the Bahamas and to New Zealand from the P.O., a few 1920s free franks from the Resident Commissioner of France, mostly from the 1970s (Est. € 400/600)		Offer
						
41436				The "Roasted Missionary" fantasy stamp by G. Collingridge, printed by lithography in black on pink paper, "used" with circular cancel, one of only a few printed		200
<p>This is the same example illustrated by Hals/Collas p.48/49, and is described as follows: "While this item is a fantasy it has a place in the political history of the islands; the eager discussions on a stamp for the group evoked by Mr. Collingridge were a symptom of the desires for stability in the rough frontier, and the settlers siezed upon a postal system as a symbol of the stability they desired."</p>						
New South Wales Used In New Hebrides						
41437	✉		236	1897 (Sep 28) Envelope to England with NSW 1890 2 1/2d tied by Vila type PM1 cds and London arrival, identified as being sent by Revd William Watt, Port Resolution, Island of Tanna (presumably by the handwriting), with Sydney bs, minor tone spots and small cover faults, ex Ray Baldwin, illustrated in Robson Lowe's Encyclopaedia vo.IV p.566		300
41438	✉		236	1897 (Oct 26) Envelope to England with NSW 1890 2 1/2d tied by Vila type PM1 cds and London arrival, with Sydney and London bs, peripheral cover faults at top, stamp has been lifted and replaced according to cert., otherwise fine, cert. RPS (1987)		300
41439	✉		236	1904 (Apr 15) Envelope to England with NSW 1897-99 2d tied by Vila type PM1 cds, incl. headed letter written by Frank Bayldon, master of the Burns Philp boat "Tambo" which provided a regular service between New Hebrides and Sydney, with company logo, Sydney cds and Spalding arrival cds on reverse, an attractive exhibition item		300
41440	✉		236	1908 (Jun 29) Picture postcard (of locals) to Sydney with NSW 1905-10 1/2d and 1902 1d tied by Vila type PM1 cds, paying the correct postcard rate, fine and late usage (the office closed in October that year), cert. RPS (1973)		300
41441	✉		236	1909 (Oct 7) Envelope to England with 1908 Fiji Ovpt 1/2d pair and 1908 New Caledonia Ovpt 5c and attempted late usage of a NSW 1902 1d with the other stamps tied by Port-Vila type PM2 cds, taxed on arrival in the UK with "1d / I.S. / C." hs, with arrival cds adjacent, unusual		150
41442	⊙ Δ	www		Group of NSW stamps used in NH, with 1890 2/12d single, single on piece, two on piece and 1897-99 2 1/2d single on piece (2), slightly mixed condition		50



41429



41434



41430



41435ex2



41440



41431



41435ex3



41441



41432



41437



41447ex



41435ex1



41438



41448



41439

Australian New Hebrides Company

- | | | | | |
|-------|---|-----|--|-------|
| 41443 | ✉ | 238 | 1897 (Jun 22) Envelope addressed to Sydney with ANHC 1d pair and NSW 1892-99 1/2d and 1888-89 2d all tied by the ANHC unauthorised type PU1 cds, paying the correct rate, slightly heavy foxing, still very scarce, ex Hals | 1'000 |
| 41444 | ✉ | 238 | 1897 (Dec) Envelope sent registered to France with strip of three ANHC 1d (only tied by registration crayon) and NSW 1897-99 1d strip of three and 2s tied by Sydney duplexes, French arrival cds, likely posted on an island south of Vila on the Messageries Maritimes (logo imprint on backflap) "Tanais" on its regular voyage from New Caledonia and New Hebrides to Sydney and cancelled on arrival, fine and rare | 1'000 |
| 41445 | ✉ | 238 | 1897 (Dec 30) Envelope to Sydney with ANHC 1d vert. pair and NSW 1892-99 1/2d and 1897-99 2d all tied by Vila type PM1 cds, paying the correct rate, Sydney bs, slightly heavy foxing, still very scarce, ex Jersey | 1'000 |
| 41446 | ✉ | www | Group of ANHC incl. used examples of the 1d (5) and 2d (6), mint 1d (3) and 2d (2) and both values in blocks of 36, plus an ANHC printed Memorandum | 100 |

"Syndicat Français"

- | | | | | |
|-------|---|-----|--|-----|
| 41447 | ✉ | 236 | Group incl. 1903 (Sep 15) Envelope addressed locally with set of four "Syndicat Francais" locals tied by type PM2 cds, vert. creases clear of stamps, minor soiling at top left, still attractive; plus mint and used set, the 5c-25c in mint blocks of four (toned), a few forgeries and the set tied on piece with unauthentic "FRANCEVILLE / Nilles HEBRIDES" cds | 300 |
|-------|---|-----|--|-----|

New Caledonia Used In New Hebrides

- | | | | | |
|-------|-----|-----|--|-------|
| 41448 | ✉ | 236 | 1904 (Feb 20) Envelope to Paris franked by pair of 1900-04 15c grey (one torn corner) tied French type PM2 cds, Ligne N French paqubot ds adjacent, with Noumea and Paris bs, two cover tears at top away from the pair, and minor foxing at foot, fine and scarce, ex Goron (sold €1'020) | 600 |
| 41449 | ✉ | 238 | 1904 (Jun 9) Picture postcard sent to France with 1903 5c dark green tied by type PM2 cds, minor discolouration from corner mounts, fine | 100 |
| 41450 | ✉ | 238 | 1904 (Jul 10) Picture postcard to England with 1900-04 10c tied French type PM2 cds, with Noumea transit adjacent, very fine | 200 |
| 41451 | ✉ | 238 | 1905 (May 19) Commercial envelope sent registered to France with 1900-04 5c (2) and 15c strip of three all tied by Port Sandwich type PM3 cds, with Noumea and Paris bs, paying the correct rate, very fine, thought to be the earliest recorded cover from Port Sandwich | 1'000 |
| 41452 | ✉ | 238 | 1905 (Jun 10) Picture postcard sent to Noumea with 1905-28 5c pale green tied by Port Sandwich type PM3 cds, minor toning to stamp | 100 |
| 41453 | ✉ | 238 | 1906 (Sep 1) Envelope to France with 1892-1904 10c rose-red tied by blue Port Sandwich type PM3 cds, Paris arrival below, fine | 200 |
| 41454 | 🕒 ✉ | www | Group incl. two picture postcards with 1905-28 5c pale green frankings, one tied Port-Vila type PM2 other Port Sandwich type PM3, reduced cover with 1892-1904 10c rose-red tied by PM3 and three singles with PM3 (Est. € 150/200) | Offer |

1908 Overprinted New Caledonia Stamps



- | | | | | |
|-------|----------|--|--|-----|
| 41455 | ***
E | | 1907 "NILLES HEBRIDES" overprint unadopted essay on 5c yellow-green pair, 10c red pair and 25c blue single, full gum on 5c & 10c, fine, produced by the French Colonial office following the ratification of the Convention but the issue was rejected | 200 |
|-------|----------|--|--|-----|



41443



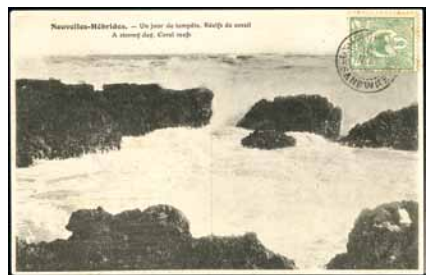
41444



41449



41450



41452



41445



41451



41453



41457



41458



41459



41460



41462

Lot N°	Symbol(s)	Photo	Page		Cat. N°	Estimate (€)
41456	✉	www	238	1909 & 1912 Envelopes sent registered to Germany, one with 1908 1F, 25c and 5c, the other with 50c and 25c, making the full set between them, all tied by Port-Vila type PM2 cds, very fine pair		150
41457	✉	238	238	1909 (Feb 27) OHMS envelope to the UK with four 1908 10c carmine (vert. & horiz. pair) tied by Vila type PM4 cds, with Sydney and Ipswich bs, fine		150
41458	✉	238	238	1909 (Mar 27) Philatelic cover with 1908 complete set tied by Port-Vila type PM2 cds sent registered to France, with Noumea and arrival bs, very fine		200
41459	✉	238	238	1909 (May 9) Envelope to Sydney franked by 1908 NC Ovpt 10c pair tied by French type PM2 cds, with Sydney bs, paying the correct rate, fine, ex Goron (sold €264)		200
41460	✉	238	238	1911 (Jan 14) Philatelic envelope with complete 1908 NC Ovpt set to 1F tied by Port Sandwich type PM3 cds (inverted year slug), envelope toned but a very late usage of this cds		100

1908 Overprinted Fiji Stamps



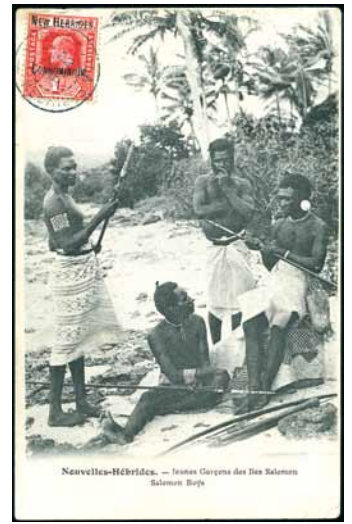
41461	○			1908 Overprinted 1903-05 Fiji Stamps, First Day Cancels (29 OCT 1908) on 1s, 6d, 5d, 2 1/2d and 2d singles, very fine & scarce (5)	5-9	300
41462	✉	238	238	1909 (Mar 9) Envelope sent registered to the USA with 1908 Fiji Ovpt 1/2d, 1d & 2 1/2d in combination with French 1908 10c tied by PM2 cds, with Noumea and US bs, paying the correct 5d rate, some toning around stamps otherwise fine		200
41463	✉	240	240	1909 (Apr 11) Envelope sent registered to France with two 1908 Fiji Ovpt 1/2d in combination with French 1908 25c tied by PM2 cds, with Noumea and Paris bs, paying the correct 35c rate, signature erased at lower left, scarce rate		200
41464	✉	240	240	1909 (Jun 6) Picture postcard (of Vila harbour taken from the Govt Residence) sent to New Caledonia with 1908 Fiji Ovpt 1d tied on picture side by French type PM2 cds, also tied is a silver vignette in French inscribed "God Protects France", fine		100
41465	✉	240	240	1909 (Jul 29) Envelope to the USA with 1908 Fiji Ovpt 1/2d and 1d in combination with French 1908 5c tied by Vila PM4 cds, with Sydney bs, paying the correct 2d rate, very fine		200
41466	✉	240	240	1910 (Feb 4) Envelope sent registered to the UK with 1908 Fiji Ovpt 2d and 2 1/2d tied by type PM4 cds, with Sydney, London and Newcastle under Lyme bs, paying the correct rate, couple of cover creases clear of stamps, very fine		200
41467	✉	240	240	1910 (Jun 16) Envelope to Sydney with 1908 Fiji Ovpt 1d pair tied by blue Vila type PM4 cds, with Sydney bs, fine, ex Goron (sold €288)		200
41468	✉	240	240	1910 (Jul 31) Envelope to Noumea with 1908 Fiji Ovpt 1d tied by blue SERVICE MARITIME type PM5A cds, arrival bs, paying the correct rate, a couple of peripheral tears clear of stamp and torn backflap, fine		300
41469	✉	240	240	1910 (Sep 16) Envelope to France with 1908 Fiji Ovpt 1d right marginal tied by blue type PM4, with Sydney and Paris bs, paying the correct rate, very fine		200
41470	✉	240	240	1910 (Oct 17) Commercial envelope to the UK with 1908 Fiji Ovpt 1d pair tied by blue type PM4 cds, with Sydney bs, paying the correct rate, vert. central cover crease, very fine		200
41471	✉	240	240	1910 (Nov 20) Envelope sent registered to New South Wales with 1908 Fiji Ovpt 2 1/2d pair and 5d tied by blue SERVICE MARITIME type PM5A cds, with Noumea and Sydney bs, some foxing, scarce		500
41472	✉	240	240	1912 (Aug 8) Envelope to New South Wales with 1908 Fiji Ovpt 1d in combination with 1908 NC Ovpt 10c tied on by French type PM2 cds, with Coff's Harbour arrival cds adjacent, paying the correct rate, odd tone spot, fine and late usage		100



41463



41468



41473ex



41464



41469



41474ex1



41465



41470



41474ex2



41466



41471



41475



41467



41472



41476

41473 ☒ 240 Group of 6 covers/cards, incl. 2d overpaying postcard to UK, registered cover to Sydney with 2d & 2 1/2d (foxing), 1/2d on postcard from the Postmaster to USA, 1d on cover (reduced at left), 1d on picture postcard of natives, 2d on ppc of the New Caledonia guillotine, mixed condition (Est. € 300/400) **Offer**

1910 New Caledonia Overprinted Stamps

41474 ☒ 240 1910 (Aug 26) & (Sep 10); Former an envelope sent registered to the USA with 1910 NC Ovpt 1F and 10c; the latter an envelope sent registered to France with 1910 NC Ovpt 10c and 25c; both tied by blue type PM2 cds, both very early usages with the earlier thought to be the EARLIEST RECORDED usage of this issue (the 5c, 10c & 1F only arrived in August and according to SG the 25c and 50c didn't arrive until 1911, 3 months or so after the Sep cover) **300**

41475 ☒ 240 1913 (Apr 13) "Scotch Whisky Broker" advertising cover with 1910 10c tied by Port-Vila type PM2 cds, vert. crease clear of stamp, very attractive **150**

1910 Fiji Overprinted Stamps

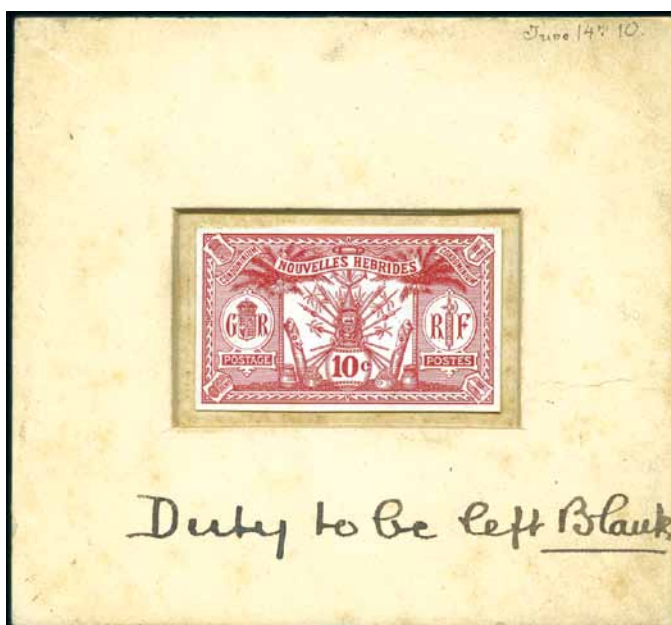
41476 ☒ 240 1911 "Service des Postes" official envelope sent registered to France with 1910 Fiji Ovpt 2d and 2 1/2d tied by Port-Vila type PM2 cds, Sydney bs, very fine **150**

41477 ☒ 242 1911 (Feb 12) Envelope sent registered to Sydney with 1910 Fiji Ovpt 1/2d (2), 1d and 2 1/2d tied by blue Vila PM4 cds, paying correct rate, very fine & scarce **300**

41478 ☒ 242 Group of 6 covers and a piece, incl. envelope to France with 1/2d in combination with 1911 Weapons & Idols 5c; two philatelic covers with values to 1s; 2 1/2d to Switzerland; 2d to Sydney; and 6d pair with Service Maritime (type PM5A) on registered cover (heavy foxing), nice group (Est. € 300/400) **Offer**

1911 Weapons & Idols

41479 S www 1911 British Currency Weapons & Idols with SPECIMEN overprint: Two complete sets, allegedly with respectively thick and thin overprints plus a few extras, lightly hinged, fine (22) 18/28 **200**



41480 P 1911 French Currency Weapons & Idols 10c carmine imperf. die proof in sunken card surround with ms "June 14th 1910" and "Duty to be left Blank", some toning, rare F12 **300**



41477



41478



41485ex



41488



41490



41491



41494

BY APPOINTMENT
TO HER MAJESTY THE QUEEN PRINTERS

HARRISON & SONS LIMITED

NEW HEBRIDES
COMMEMORATIVE ISSUE
50th ANNIVERSARY OF
THE CONDOMINIUM

PHOTOGRAVURE PRINTED
STAMPS PREPARED FOR
THE CROWN AGENTS FOR
OVERSEAS GOVERNMENTS
AND ADMINISTRATIONS

Specialists in Photogravure Stamp Printing. Established 1750

HARRISON AND SONS LTD
44-47 ST. MARTIN'S LANE
LONDON W.C.2 ENGLAND



41506ex1



- | | | | | | |
|-------|------------|-----|---|-----|-------|
| 41481 | (*) P
S | | 1911 French Currency Weapons & Idols 40c imperf. plate proof in blue-green with Specimen ovpt, very fine | F16 | 100 |
| 41482 | ⊙ ✉ | www | Group of 4 covers incl. 1d on postcard from Banks Island to USA, 2d to Paris, 10c to South Australia, 20c to England, all but one with Service Maritime cds, plus three single used 20c with "A.S. MOTAU" ship hs | | 100 |
| 41483 | ✉ | | Group of 19 covers (both British & French currency), only 3 philatelic covers (incl. one with complete French set sent from the Condominium Postmaster), showing a range of rates up to 3 1/2d censored cover to France, with used picture postcards, single/double letter rates to UK, France and Australia, two registered with violet cancels, an interesting mix (Est. € 300/500) | | Offer |

1920-24 Overprinted Weapons & Idols



41484



41486



41487

- | | | | | | |
|-------|-----------|-----|---|--------|-------|
| 41484 | * | | 1920 1d on 5d Sage-Green with inverted surcharge, mint lh, couple of light small creases, fine and rare with only 14 recorded examples, cert. BPA (1983) (SG £4'250) | 30a | 1'500 |
| 41485 | ** | 242 | 1920-21 2d on 40c red on yellow on RF wmk paper, in mint nh top left corner marginal vertical strip of three, with matching positional item on the crown CA wmk paper, attractive duo (SG £390+) | 35 | 100 |
| 41486 | * | | 1920 Overprinted 1911 issue, 2d on 40c red on yellow, watermark RF, mint, very fine, cert Fourcaut | 35 | 80 |
| 41487 | * | | 1924 5d on 2 1/2d with inverted surcharge, mint lh, printing offset on gum and some light surface abrasions, rare with only 20 recorded examples, cert. RPS (1976) (SG £3'250) | 42a | 800 |
| 41488 | (✉) | 242 | 1920-21 5c on 50c red on orange WITHOUT "CONDIMINIUM", tied to cover front to Australia along with normal 5c on 50c, 10c on 25c and British 1d on 1s, 1d on 2s and 1d on 5s, tied by Vila 9.11.20 cds, fine (only 300 stamps were accidentally overprint) | F32a | 300 |
| 41489 | ** *
田 | www | 1920 Overprinted 1910-21 issues, French Currency, 5c on 40c red on yellow, mint corner block of 10 showing stamp in position 26 with "missing dot" variety, very rare variety in a spectacular unit, ex Goron | F34var | 300 |

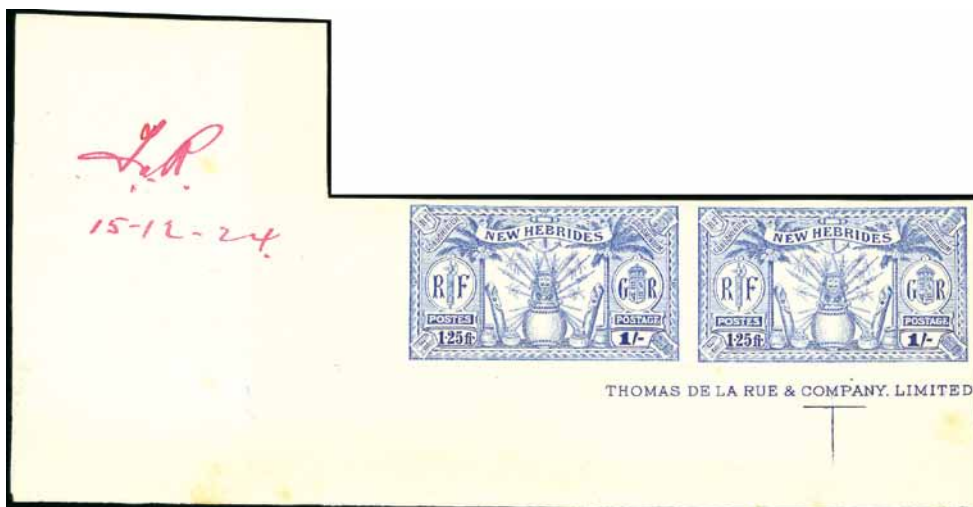
1925 Dual Currency

- | | | | | | |
|-------|---|-----|--|--|-----|
| 41490 | E | 242 | 1925 British Dual Currency essays, 1911 set of nine values affixed to a partitioned sheet and used for essays for the 1925 issue, with each altered by hand in ink showing the original value in the centre deleted and the dual French/English currencies inserted below "POSTES/POSTAGE," additionally each has the number to be printed typed below in red and instructions added for the new colours for four values, while the other five are marked "no change," the whole mounted on a slightly larger sheet with a typed heading in French, a unique item from the De La Rue archives, ex Jersey | | 500 |
|-------|---|-----|--|--|-----|

- 41491** E 242 1925 French Dual Currency essays, 1911 set of 11 values affixed to a partitioned sheet and used for essays for the 1925 issue, with each altered by hand in ink showing the original value in the centre deleted and the dual French/English currencies inserted below "POSTES/POSTAGE," additionally each has the number to be printed typed below in red and instructions added for the new colours for five values, while the other six are marked "no change," the whole mounted on a slightly larger sheet with a typed heading in French, a unique item from the De La Rue archives, ex Jersey **500**



- 41492** * P 1925 Dual Currency imperf. plate proofs on watermarked ungummed paper in the chosen colours of the 1/2d vert. pair (crease), 1d, 2d block of four (tear and creasing) and 2s vert. pair (crease) **400**



- 41493** (*) P 1925 Dual Currency imperf. plate proofs in pale blue, incl. 2 1/2d, 3d and 5d singles, and 1/2d, 10d, 1s and 2s in lower marginal pairs with printer's inscription (the 1s and 2s initialled and dated) **1'200**

- 41494** ☒ 242 1925 Dual Currency group of 14 covers incl. 1d/10c on advertising card to USA; 10d/1F & 5d/50c on registered cover; Tourville airmail with "PAR AVION" hs on stamps; 5d/50c (3) on Service Maritime reg'd cover; four commercial covers (two inter-island); two New Caledonia covers cancelled New Hebrides / Inter Isles; forgery with complete set, etc., interesting group (Est. € 200/300) **Offer**



- 41495** * P 1925 British Dual Currency 1d colour trials on gummed watermarked paper (2); one in red on yellow (adopted for French 40c), very fine; and other in purple on blue (adopted for 2s), gum wrinkling otherwise fine 44 **150**



41496

* (*)
P S

1925 British Dual Currency 5d, page showing imperf. plate proof in pale blue, perf. colour trial of the 1d in the chosen colour of the 5d (plus normal 1d for comparison), imperf. plate proof in chosen colour in vert. pair, and the issued stamp and postage due stamp plus their Specimen ovpts

47

300



41497

* (*)
P S

1925 British Dual Currency 6d, page showing plate proof in black with ms "Value correct", initialled and "13-11-24", and imperf. plate proof lower left corner imprint marginal pair in pale blue with same initials and "15-12-24", plus a single with Specimen ovpt and a normal

48

600



41498

* (*)
P S

1925 British Dual Currency 5s, page showing plate proof in black with ms "Value correct", initialled and "13-11-24"; imperf. plate proof lower left corner imprint marginal pair in pale blue with same initials, "15-12-24" and small printing flaw circled; 1d colour trial in the chosen colour of the 5s; imperf. plate proof block of four in the chosen colour; plus a single with Specimen ovpt and a normal

51

800



41499



41501



41500

- | | | | | |
|-------|-------|--|---------|-----|
| 41499 | (*) P | 1925 French Dual Currency 9 imperf. plate proofs singles in pale blue, incl. 5c, 10c, 20c, 40c, 50c, 75, 1F, 2F and 5f, fine | F42/F52 | 800 |
| 41500 | P | 1925 Dual Currency 4d/40c die proof in black on wove paper, 81x54mm, ms "14-11-24", very fine | F47 | 300 |
| 41501 | ** | 1938 Gold Currency set to 10F in mint nh lower left corner marginals, fine (SG £325) | 52-63 | 100 |
| 41502 | 242 | 1956 50th Anniversary of the Condominium 5c, 10c and 50c on a Harrison & Sons presentation card, very fine | | 100 |

Collections & Group Lots



- | | | | | |
|-------|-----|---|--|-------|
| 41503 | *** | 1908-79, Virtually complete mint collection, incl. 1908 1s wmk crown CA mint nh (cert. RPS), 1920 2d on "RF" wmk paper (cert. RPS), 1920-21 5c mint og without "CONDOMINIUM" (cert. BPA), 5c on 40c with severely displaced ovpt (heavy gum creasing), 2d on 40c on RF wmk mint nh (cert. RPS), 1924 French surch. values in sheets (two showing the "R" & "F" wmk), 1924 English surch. set in sheets of 30, 1925 issue in multiples incl. French in blocks of four with printer's imprint, 1938 mint nh set, France Libre mint corner marginal set, and later incl. 1977 "FNH" new currency overprints, mostly very fine (Est. € 900/1'200) | | Offer |
| 41504 | ✉ | www 1938 New Currency: 16 covers and a ppc of a mail ship with a range of cancels incl. "INTER-ISLES", "INTER-ISLAND", "INTERISLAND SERVICE", "Sce INTERINSULAIRE", Vila, Santo, Sydney Paquebot, etc., with registered, censored, airmails, useful group (Est. € 300/500) | | Offer |



Lot N°	Symbol(s)	Photo	Page		Cat. N°	Estimate (€)
41505	** * ⊙ Δ ✉	www	1908-63, Small exhibition collection mounted on 17 pages, showing a great deal of completion, noted the 1920 5c on 50c without the Condominium overprint, very fine (Est. € 300/500)			Offer
41506	✉	242	1909-1981, Sea Post collection of 123 covers (the balance not included with Bill Holland's main exhibit), mostly 1950s onwards, "Inter-Island" cds, a vast array of Paquebots and Ship hs (incl. 1923 El-Kantara), Service Maritime cds and registered hs, 1936 cover cancelled in Noumea, cover with French & British 1925 complete sets, etc. (Est. € 600/800)			Offer
41507	✉	248	1860-1925, Group of 12 covers incl. two NSW 6d diadem frankings to Scotland, a New Caledonia cover to the Governor of New Hebrides in Noumea, five postcards and a cover with 1910 NC Ovpt 10c frankings, cover with 1908 Fiji Ovpt 1d and one with 2d, postcard with 1910 Fiji Ovpt 1/2d pair and reg'd cover with 2 1/2d pair and 1920-21 Surch. mixed currency registered franking, a fine group (Est. € 500/700)			Offer
41508	✉	248	1911-1960s, Collection of 61 covers from Weapons and Idols issues, incl. registered 1925 franking to Vietnam, 1937 cover from Wallis & Fortuna cancelled in transit in NH with "SERVICE INTERINSULAIRE / NOUVELLES HÉBRIDES" hs, through to more modern material such as philatelic covers and FDCs, with registered, censored, paquebot, etc., a diverse group (Est. € 300/500)			Offer
41509	✉	248	1912-37, Group of 14 covers all cancelled in Sydney, with better incl. cover (slightly reduced) with 1920-21 10c on 25c pair, 1911 1/2d and Australia KGV 2d, and 1910 Fiji Ovpt 2d on cover, a range of frankings and Sydney cancels, unusual (Est. € 200/300)			Offer
41510	✉	www	1921-39, Group of 37 covers mostly Weapons & Idols frankins incl. surcharges and dual currencies, a mixture incl. registered, used postcards, two 1924 FDCs, as well as a letter from the Postmaster regarding the 1920 surcharge issue, etc., a nice variety (Est. € 300/400)			Offer
41511	✉	248	AIRMAILS: 1921-79, Group of 41 airmail covers incl. 2 covers from the 1929 "Tourville" first airmail with "PAR AVION" ovpts, several TRAPAS first flight covers, etc. (Est. € 300/400)			Offer
41512	✉	248	CENSORED: WW2 censored cover group of 29 covers, a few incoming, with different censor labels and cachets, some registered, incl. some uncensored covers sent during the period, an attractive group (Est. € 200/300)			Offer
41513	✉	248	CENSORED: WW2 censored cover group of 27 covers, a couple incoming from USA, with different censor labels, cachets and cancels, mostly 1938 10c and France Libre 10c frankings, fine group (Est. € 200/300)			Offer
41514	✉	248	MARITIME: 1923-55, Group of 27 maritime covers, incl. 1923 "PAQUEBOT / EL-KANTARA" hs on 1911 25c on cover (with postcard of the ship below), RMS Thaiti cancel on 1911 franking, as well as other country frankings with NH paquebot cancels (Malay, Nauru, Papua, GB, HK, NC, Norway, etc.), NH frankings cancelled in Noumea and Fiji, etc., attractive group (Est. € 200/300)			Offer
41515	✉	www	PICTURE POSTCARDS: Group incl. 15 depicting mail ships, 38 from the 1920s (3 franked), hs photographic postcards from ca.1920s, and 23 modern, plus 4 Radio QSL cards (Est. € 200/300)			Offer
41516	✉	www	PICTURE POSTCARDS: Group of 33 ppcs incl. two sent from New Caledonia, around 20 or so from ca.1920s, rest modern, fine group (Est. € 150/200)			Offer



41517	** * S		POSTAGE DUES: 1925-57 Mint (mixture of mh and mnh) collection incl. 1925 French & British sets and both Specimen sets, 1938 British & French sets plus both Specimen sets, 1941 set, 1953 British & French sets and 1957 British & French sets, mostly very fine (SG £1747.25) (Est. € 300/400)			Offer
-------	-----------	--	---	--	--	-------



41506ex2



41508ex1



41513ex1



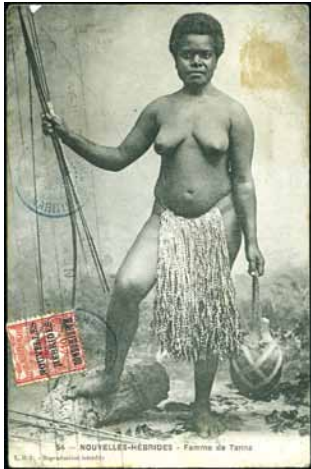
41506ex3



41508ex2



41513ex2



41507ex1



41509ex1



41514ex1



41507ex2



41509ex2



41514ex2



41507ex3



41511ex



41518ex



41512ex

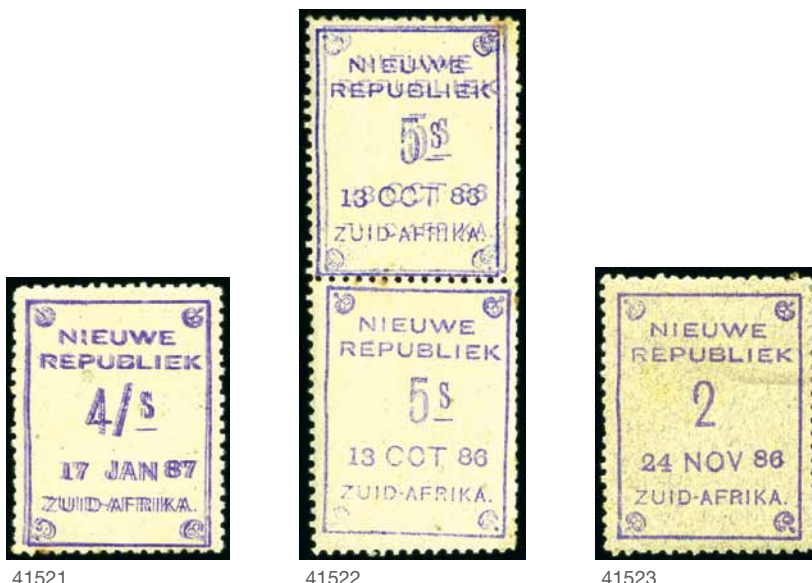
41518 ☒ 248 POSTAGE DUES: 1932-80, Group of 31 covers with a mixture of hs and postage due stamp used, incl. three 1932 incoming from Indochine with "POSTAGE DUE" and "CHIFFRE TAXE" mixed frankings, most from the 1970s incoming from UK & France, scarce group (Est. € 300/500) **Offer**

41519 ☒ 250 REGISTERED: 1921-79, Group of 51 covers and two large pieces, mostly with the 1925 Dual Currencies issues, showing a range of registered labels and hs, some attractive frankings (although philatelic) incl. mixed French/British currency frankings and a cover to Viet Nam, mostly Port-Vila but later some Santo, Forari, Tanna, Longana, etc., very useful collection (Est. € 300/400) **Offer**



41520 *** S 1910-38, Group of specimen ovpts and punctures, incl. 1910 Fiji Ovpt set, British 1911 set of 9 and the three 1921 reprints on multi Crown script CA wmk, French 1911 set of 11, British 1925 values, British 1938 set and French 1938 values incl. duplicates, British & French postage due sets, mostly very fine (Est. € 300/500) **Offer**

New Republic



41521

41522

41523

41521 * 1886-87 4/s on yellow paper with double overprint variety, mint hr, some stains, a scarce variety, ex Ferrary, cert. RPS (1980) 15i **600**

41522 * 1886-87 5s on yellow paper with double overprint variety in vertical pair with normal stamp, mint hr, some tone spots, a scarce variety, ex Ferrary, cert. RPS (1980) 16i **400**

41523 * 1886-87 2d on blue granite with with "d" omitted, mint hr, corner and hinge remnant crease, still a scarce variety, ex Ferrary (SG £1'200) 27a **600**

You can view our catalogues and bid during the auction
 via our website, www.davidfeldman.com

